



VARIMETER NA

DOLD 

Voltage and frequency monitor RP 9811 international

With the new **voltage and frequency monitor RP 9811** of the **VARIMETER NA** family DOLD offers a safe and standard-conforming solution for optimal mains monitoring of the energy feed to the public grid. User-friendly: The unit can be adjusted quickly and simply with only two rotary switches. Use the first rotary switch to select one of the several preset standards according to the national requirement. The mains system is selected quickly and simply on the unit using the second rotary switch. Done! You can adjust each parameter individually with menu-guidance in case of different requirements. All measuring variables required are constantly monitored by the unit. In the event of incorrect voltage and frequency values the RP 9811 safely disconnects the distributed power generation system from the grid.

Versatile

- ▶ Voltage and frequency monitoring for distributed power generation systems
- ▶ Additional inputs allow for the integration into your plant concepts
- ▶ Large auxiliary AC/DC voltage range, advanced protection function via vector shift and RoCoF

User-friendly and flexible

- ▶ Adjustable with only two rotary switches
- ▶ Depending on the standard or guideline, simple and easy to implement through already preconfigured parameter sets:

| | |
|-----------------------|---|
| DIN VDE 0126-1-1 | (Generating systems on the low-voltage grid) |
| VDE-AR-N 4105 | (Generating systems on the low-voltage grid) |
| BDEW-directive | (Generating systems on the medium-voltage grid) |
| CEI 0-21 | (Generating systems in Italy) |
| ÖVE/ÖNORM E8001-4-712 | (Generating systems in Austria) |
| G59/3 | (Generating systems in UK) |
- ▶ Different settings can be made with simple menu navigation on the display
- ▶ Diagnostics through multi-colour illuminated LCD displays and LED indicators

Safe

- ▶ Fail-safe through 2-channel design
- ▶ Password protection
- ▶ Manipulation protection through sealable transparent cover
- ▶ Checksum formation through the set parameters

 **BG ETEM**

Our experience. Your safety.

Voltage and frequency monitor RP 98 I I

Technical features

- ▶ Continuous monitoring of the outer conductor and phase voltages
- ▶ Monitoring of the section switches, test button with trigger test with measuring the trigger time
- ▶ Over and under voltage protection
- ▶ Over and under frequency protection
- ▶ Monitoring the 10-minute mean value
- ▶ Passive isolated grid detection
- ▶ Error memory
- ▶ Storage of the disconnecting time
- ▶ Connection or reconnection after adjustable delay preset
- ▶ Random-controlled disconnection in the range of 50.2 Hz and 51.5 Hz for non-adjustable distributed power generation systems
- ▶ Additional fault signalling relay
- ▶ Illuminated LCD display and LED indicators
- ▶ High measuring accuracy
- ▶ Temperature range - 30 ... + 60°C
- ▶ Can be used according to EEG 2012 and SysStabV
- ▶ Certificate of non-objection from BG ETEM according to VDE-AR-N 4105, DIN VDE 0126-1-1, BDEW-directive, CEI 0-21
- ▶ Acc. to DIN EN 60 255-1
- ▶ Installation type 4TE
(Width x Height x Depth: 70 x 90 x 71 mm)



Voltage and frequency monitor
RP 98 I I

Ordering information

Standard type: RP 98 I I.03 3/N AC 400 / 230 V
Article number: 0065562

Applications

The RP 98 I I provides for the safe monitoring of the grid parameters stipulated in the guideline and guarantees stable power grids.

The following scenarios are conceivable, amongst others:

- ▶ Due too much power supplied and too little power used the frequency in the public supply grid rises. The RP 98 I I detects this excessive increase and disconnects the system from the grid.
- ▶ The public utility company performs maintenance work on the supply grid. The RP 98 I I detects a disconnected grid and disconnects the system securely.

Application examples

- ▶ Wind power plant
- ▶ Photovoltaic
- ▶ Hydroelectric plant
- ▶ Combined heating and power generator
- ▶ Biomass plant

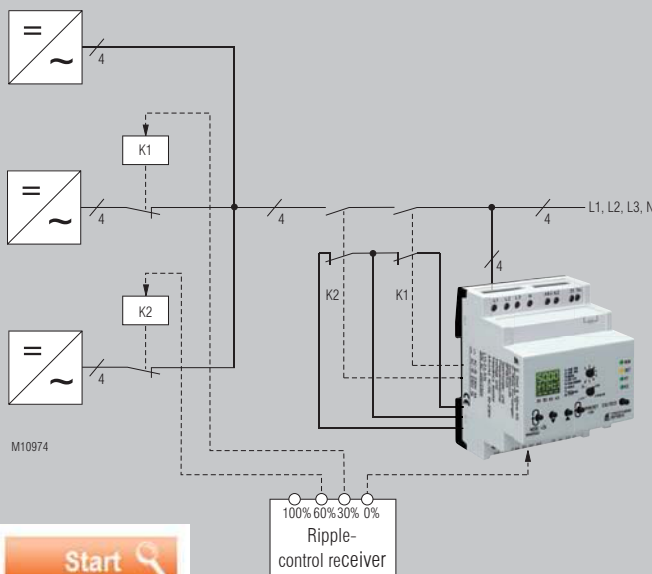


Further information

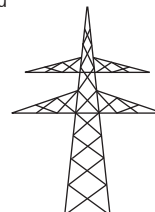
RP 98 I I

Start

www.dold.com



Supply to the
public grid



DOLD 

E. DOLD & SÖHNE KG
P.O. Box 1251 • 78114 Furtwangen • Germany
Phone +49 7723 6540 • Fax +49 7723 654356
dold-relays@dold.com • www.dold.com

FE77/0196 co